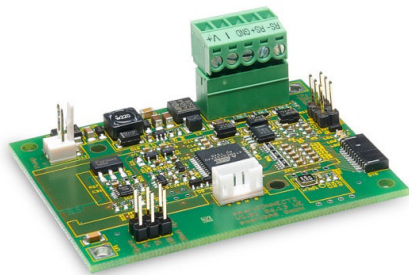


CONNECT INTERFACE

Item number: Z6-00004



Digital interface compatible to all smartGAS EVO – sensors:
 BASIC^{EVO}
 FLOW^{EVO}

The CONNECT INTERFACE electronic offers a simple solution for connecting smartGAS EVO - sensors in various applications using standardized interfaces. Thanks to the analogue outputs (e.g. 4-20mA, 0-10V) or the RS485 Modbus interfaces of the CONNECT INTERFACE all smartGAS sensors can be directly connected to a variety of process control analyzing systems.

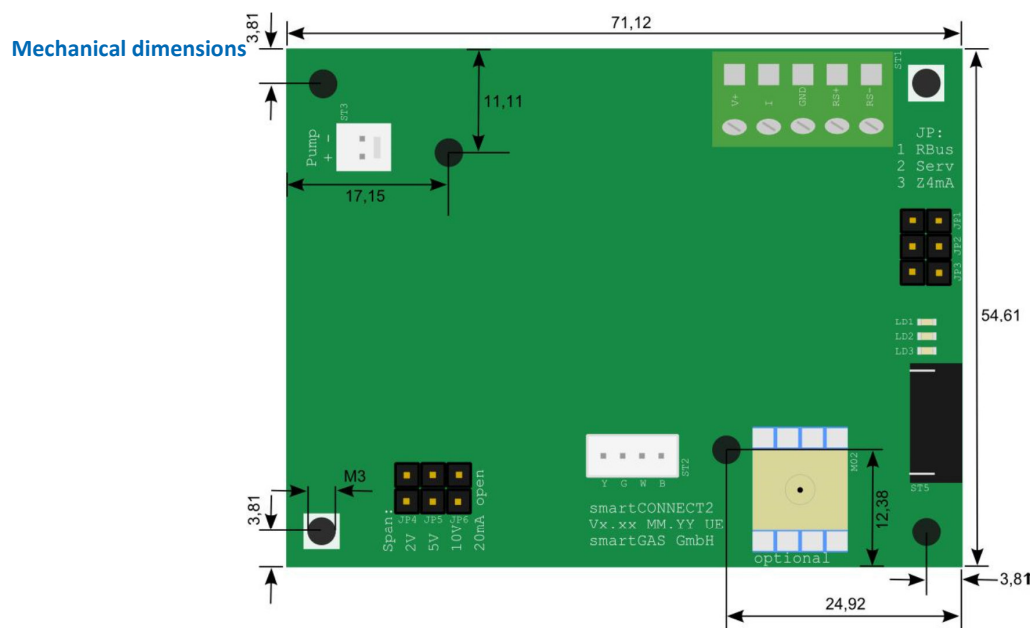
The integrated pressure compensation provides a better precision in measurement and the on-board LED indicate the sensor status for easy handling.

- **Integrated ambient pressure compensation**
- **Optional internal pressure compensation (please request)**
- **Zero and Span calibration per jumper or software**
- **On board supply (6V DC) for peripheral equipment e.g. micro pump**
- **Operating status with 3 LED**

CONNECT INTERFACE

Item number: Z6-000004

General features	
Dimensions:	72 x 55 x 20 mm (L x W x H)
Weight:	25 g
Electrical inputs and outputs	
Supply voltage:	12-28 V (DC)
Analogue output signal:	0(4)-20mA (DC), max. 500 Ohm (optional Namur NE 43 compatible) 0-2V / 0-5V / 0-10V (DC)
Digital output signal:	Modbus ASCII / RTU via RS 485, autobaud, autoframe
Calibration:	per jumper or software
Electric connector:	screw clamp (max. cable \varnothing = 1.5 mm ²)
Climatic conditions	
Operating temperature:	-20 .. +50 °C
Storage temperature:	-20 .. + 60 °C
Air pressure:	800 .. 1150 hPa
Ambient humidity:	0 .. 95 % relative humidity (not condensing)



Headquarter Switzerland:
Angst+Pfister Sensors and Power AG

Thurgauerstrasse 66
CH-8050 Zurich
Phone +41 44 877 35 00
sensorsandpower@angst-pfister.com

Office Germany:
Angst+Pfister Sensors and Power
Deutschland GmbH
Edisonstraße 16
D-85716 Unterschleißheim
Phone +49 89 374 288 87 0
sensorsandpower.de@angst-pfister.com



We are here for you. Addresses and Contacts.

Sales Germany & Austria

Geometrical sensors
Other products

Kurt Stritzelberger
Phone +49 89 374 288 87 22
kurt.stritzelberger@angst-pfister.com

Pressure sensors
Other products

Gerhard Vetter
Phone +49 89 374 288 87 26
gerhard.vetter@angst-pfister.com

Gas sensors and modules

Peter Felder
Phone +41 44 877 35 05
peter.felder@angst-pfister.com

Sales Switzerland & Liechtenstein

Postcode 3000 – 9999

Basil Frei
Phone +41 44 877 35 18
basil.frei@angst-pfister.com

Postcode 1000 – 2999

Christian Mohrenstecher
Phone +41 76 444 57 93
christian.mohrenstecher@angst-pfister.com

Sales International Key Accounts

Peter Felder
Phone +41 44 877 35 05
peter.felder@angst-pfister.com

Sales Other Countries / Product Management

Pressure Sensors
Load Cells

Philipp Kistler
Phone +41 44 877 35 03
philipp.kistler@angst-pfister.com

Gas sensors
Gas sensor modules

Dr. Thomas Clausen
Phone +49 89 374 288 87 24
thomas.clausen@angst-pfister.com

Flow / Level / Medical products

Dr. Adriano Pittarelli
Phone +49 89 374 288 87 67
adriano.pittarelli@angst-pfister.com

Power supplies

Sebastiano Leggio
Phone +41 44 877 35 06
sebastiano.leggio@angst-pfister.com

Linear position sensors
Angle sensors

Eric Letsch
Phone +41 44 877 35 14
eric.letsch@angst-pfister.com

Accelerometers
Sensor elements

Christoph Kleye
Phone +49 89 374 288 87 61
christoph.kleye@angst-pfister.com

Drive technology
CH Postcode 5000 – 9999 / DE

Roman Homa
Phone +41 76 444 00 86
roman.homa@angst-pfister.com

Drive technology
CH Postcode 1000 – 4999 / AT / IT / FR

Christian Mohrenstecher
Phone +41 76 444 57 93
christian.mohrenstecher@angst-pfister.com

Harald Thomas
Phone +49 89 374 288 87 23
harald.thomas@angst-pfister.com