

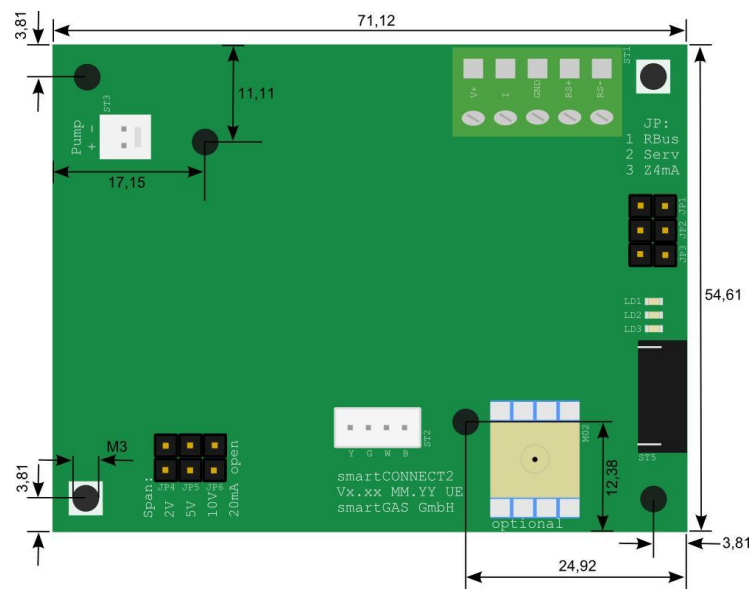
MADE IN GERMANY

CONNECT INTERFACE

Item-No.: Z6-000004



- Integrated ambient pressure compensation
- Optional internal pressure compensation (please request)
- Zero and Span calibration per jumper or software
- On board supply (6V DC) for peripheral equipment e.g. micro pump
- Operating status with 3 LED
- Long lifetime

**Application examples**

Emission monitoring CEMS
Biogas
Process control
Fruit ripening
High voltage

Customizing options

High performance corrosion resistant sample gas pump
Easy to maintain robust fine dust filter
Corrosion resistant flowmeter with precise needle valve
Reliable condensate monitoring
Acid dosing pump

Connect_Interface_Z6-000004
Edition 2/11_2021

Accessory | Connect Interface | Z6-000004

General features

Dimensions:	72 x 55 x 20 mm (L x W x H)
Weight:	25 g

Electrical inputs and outputs

Supply voltage:	12-28 V (DC)
Analogue output signal:	0(4)-20mA (DC), max. 500 Ohm; (optional Namur NE 43 compatible); 0-2V / 0-5V / 0-10V (DC)
Digital output signal:	Modbus ASCII / RTU via RS 485, autobaud, autoframe
Calibration:	per jumper or software
Electric connector:	screw clamp (max. cable $\varnothing = 1.5 \text{ mm}^2$)

Climatic conditions

Operating temperature:	-20 .. +50 °C
Storage temperature:	-20 .. + 60 °C
Air pressure:	800 .. 1150 hPa
Ambient humidity:	0 .. 95 % relative humidity (not condensing)

All rights reserved. Any logos and/or product names are trademarks of smartGAS. The reproduction, transfer, distribution or storage of information contained in this brochure in any form without the prior written consent of smartGAS is strictly prohibited. All specifications – technical included – are subject to change without notice. Depending on the application, the target gas and the measurement range the technical data may differ. No liability is accepted for any consequential losses, injury or damage resulting from the use of this document or from any omissions or errors herein. The data is given for guidance only. It does not constitute a specification or an offer for sale.

At first initiation and depending on application and ambient conditions recalibration is recommended. Recurring cycles of recalibration are recommended.

Connect_Interface_Z6-000004
Edition 2/11_2021

We are here for you. Addresses and Contacts.

Headquarter Switzerland:

Angst+Pfister Sensors and Power AG
Thurgauerstrasse 66
CH-8050 Zurich
Phone +41 44 877 35 00
sensorsandpower@angst-pfister.com

Office Germany:

Angst+Pfister Sensors and Power Deutschland GmbH
Edisonstraße 16
D-85716 Unterschleißheim
Phone +49 89 374 288 87 00
sensorsandpower.de@angst-pfister.com

Scan here and get an overview of personal contacts!



sensorsandpower.angst-pfister.com
