

MiCs Quick Start Evaluation Board SGX Sensortech

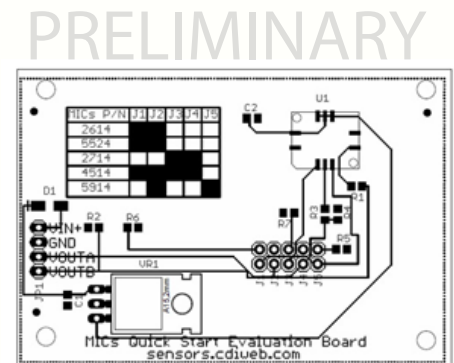
MiCs Quick Start Evaluation Board

Instant testing – Just add power
Test 5 different MiCs devices
Complete Circuit on PCB for each Sensor
7 to 20 V Input Supply Voltage

Overview

While the MiCs SMD parts are difficult to test and require a 5 V power supply for correct operation, the Quick Start Demo board allows the user to be testing the SGX SMD metal oxide gas sensors within minutes after opening the box. The MiCs quick start board can use any input power supply from 7V to 15 V. One of five different sensors can be placed into the universal onboard IC socket, and by installing the correct jumper the circuit is configured for immediate testing of the sensor.

The MiCs quick Demo board can individually test the following MiCs sensors: [MiCs-2614](#) (Ozone), [MiCs-5524](#) (CO), [MiCs-2714](#) (NO₂), [MiCs-4514](#) (Dual sensor, CO and NO) and the MiCs- 5914 (NH₃) just by installing the correct jumpers as shown on the PCB. (4 Jumpers are included in each kit).



Circuit Overview

The circuit for each sensor is exactly the circuit shown on the individual datasheet for the parts, and the jumpers will allow for the correct resistors configuration required. While the input voltage is 7 to 20V, the board uses a regulator (LM7805T) to reduce the voltage to the MiCs device to 5V. After this, the jumpers determine the circuit used to correct supply the heater and load resistance for each device. The complete circuit of the Quick Start Demo board is shown in Figure I.

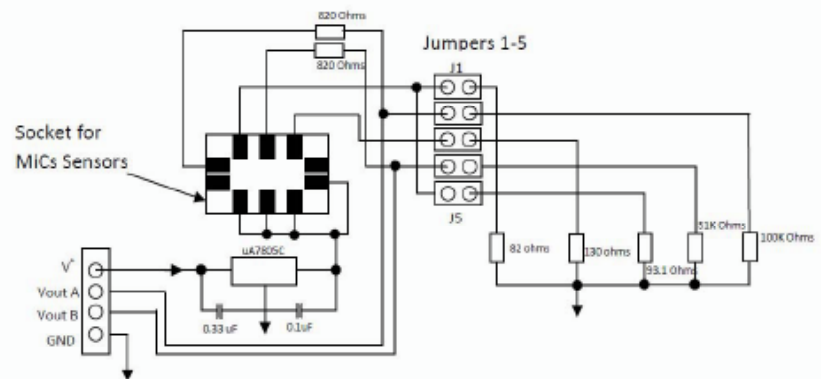


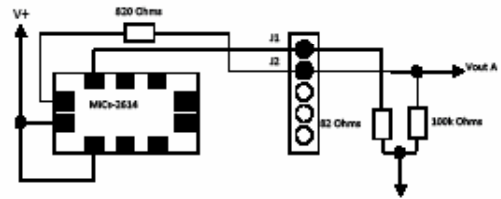
Figure I

The individual circuits for each of the metal oxide sensors are very simply and straight forward. Please note that the TI regulator was left out of the circuit diagrams below for simplicity only, so will the input supply voltage can be 7V to 25V, V+ for the individual circuits is 5V.

MiCs Quick Start Evaluation Board SGX Sensortech

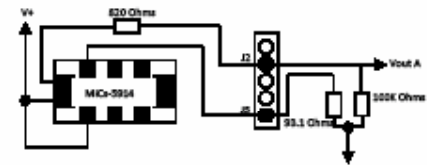
MiCs-2614 and the MiCs-5524

To test the MiCs-2614 (Ozone sensor) or the MiCs-5524 (Carbon Monoxide) only Jumper 1 and 2 should be installed. With these jumpers in place the circuit is:



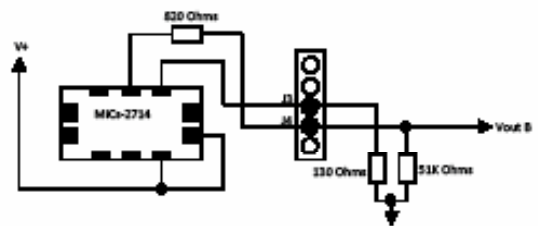
MiCs-5914

To test the MiCs-5914 (Ammonia sensor) only Jumper 2 and 5 should be installed. With these jumpers in place the circuit is:



MiCs-2714

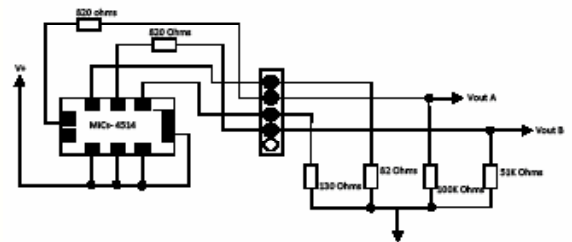
To test the MiCs-2714 (Nitrogen Dioxide sensor) only Jumper 3 and 4 should be installed. With these jumpers in place the circuit is:



MiCs-4514

To test the dual MiCs-4514 (Carbon Monoxide and Nitrogen Dioxide sensor) only Jumper 1, 2, 3 and 4 should be installed. With these jumpers in place the circuit is:

In the configuration, the CO sensor is on Vout A, and the NO2 output is on Vout B.



Conclusion:

The quick start demo board will allow the quick testing of the MiCs sensors, and overcomes the common drawback of working with surface mount devices. However, please make sure to the MiCs-AN2 Q and A, as this will answer many of the most common questions asked, notable:

- 1) The MiCs sensors are not generally used as an exact measurand device. That is, you will not be able to measure to an exact ppm or ppb level, but rather they are best used a low/med/high indication of a gas presence.
- 2) The MiCs devices work best in a constant airflow application. These devices are not made to sit in the corner of a room and monitor air. The best situation would be to have the sensor sit in the air duct and air input or output.
- 3) While the MiCs sensor are advertised to monitor one gas, the sensors are all cross sensitive to other gases. Testing in a given application is highly recommended.
- 4) Pulsing power to the sensor is not recommended. In general, the sensors have long warm up time to function properly. AN2 will guide you through other questions as well. However, while there are a few quirks when using the MiCs device, over 20 Million sensors are used annually for IAQ applications. Good Luck with yours!

Headquarter Switzerland:
Angst+Pfister Sensors and Power AG

Thurgauerstrasse 66
CH-8050 Zurich
Phone +41 44 877 35 00
sensorsandpower@angst-pfister.com

Office Germany:
Angst+Pfister Sensors and Power
Deutschland GmbH
Edisonstraße 16
D-85716 Unterschleißheim
Phone +49 89 374 288 87 0
sensorsandpower.de@angst-pfister.com



We are here for you. Addresses and Contacts.

Sales Germany & Austria

Geometrical sensors
Other products

Kurt Stritzelberger
Phone +49 89 374 288 87 22
kurt.stritzelberger@angst-pfister.com

Pressure sensors
Other products

Gerhard Vetter
Phone +49 89 374 288 87 26
gerhard.vetter@angst-pfister.com

Gas sensors and modules

Peter Felder
Phone +41 44 877 35 05
peter.felder@angst-pfister.com

Sales Switzerland & Liechtenstein

Postcode 3000 – 9999

Basil Frei
Phone +41 44 877 35 18
basil.frei@angst-pfister.com

Postcode 1000 – 2999

Christian Mohrenstecher
Phone +41 76 444 57 93
christian.mohrenstecher@angst-pfister.com

Sales International Key Accounts

Peter Felder
Phone +41 44 877 35 05
peter.felder@angst-pfister.com

Sales Other Countries / Product Management

Pressure Sensors
Load Cells

Philipp Kistler
Phone +41 44 877 35 03
philipp.kistler@angst-pfister.com

Gas sensors
Gas sensor modules

Dr. Thomas Clausen
Phone +49 89 374 288 87 24
thomas.clausen@angst-pfister.com

Flow / Level / Medical products

Dr. Adriano Pittarelli
Phone +49 89 374 288 87 67
adriano.pittarelli@angst-pfister.com

Power supplies

Sebastiano Leggio
Phone +41 44 877 35 06
sebastiano.leggio@angst-pfister.com

Linear position sensors
Angle sensors

Eric Letsch
Phone +41 44 877 35 14
eric.letsch@angst-pfister.com

Accelerometers
Sensor elements

Christoph Kleye
Phone +49 89 374 288 87 61
christoph.kleye@angst-pfister.com

Drive technology
CH Postcode 5000 – 9999 / DE

Roman Homa
Phone +41 76 444 00 86
roman.homa@angst-pfister.com

Drive technology
CH Postcode 1000 – 4999 / AT / IT / FR

Christian Mohrenstecher
Phone +41 76 444 57 93
christian.mohrenstecher@angst-pfister.com

Harald Thomas
Phone +49 89 374 288 87 23
harald.thomas@angst-pfister.com