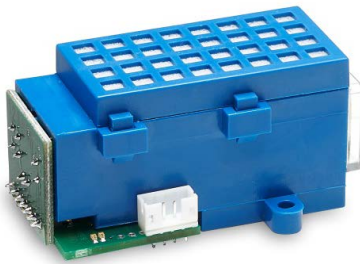


blue performance
BASIC^{EVO}

 CH₄ // Methane // 4.4 Vol.-%
 smartGAS item number: B3-042446-00000


- Pre calibrated
- Gas entry by diffusion
- 3.3 - 6 V DC supply voltage
- Modbus ASCII or RTU
- Status indication by LED

Non Dispersive Infrared (NDIR) gas sensor for ambient air monitoring using dual wavelength technology, designed especially for methane leakage.

The BASIC^{EVO} CH₄ sensor can easily be integrated into OEM systems, where long term stability, repeatability and reliable performance are required. It can be utilised as a methane detector in industrial facilities for detection of Methane below lower explosive level (LEL). Other scopes of applications comprise continuous gas monitoring in biogas stations and production processes as well as usage for various areas of scientific research. Special build-in solutions to provide IP54 protection and easy field gas-calibration are available as option.

Modbus ASCII or RTU data communication offers a variety of options to connect the BASIC^{EVO} gas sensor to a controller.

APPLICATION EXAMPLE
BIOGAS STATIONS
PRODUCTION PROCESS
WORKPLACE SECURITY
RESEARCH

BASIC^{EVO}

 CH₄ // Methane // 4.4 Vol.-%

smartGAS item number: B3-042446-00000

General features	
Measurement principle:	Non Dispersive Infra-Red (NDIR), dual wavelength
Measurement range:	0 .. 4.4 Vol.-% Full Scale (FS)
Gas supply:	by diffusion (atmospheric pressure)
Dimensions:	62 mm x 37 mm x 30 mm (L x W x H)
Warm-up time:	< 2 minutes (start up time) < 11 minutes (fade in finished) < 30 minutes (full specification)
Measuring response *	
Response time (t ₉₀):	appr. 60 s
Digital resolution (@ zero):	0.01 Vol.-%
Detection limit (3 σ):	≤ 0.022 Vol.-%
Repeatability:	≤ ± 0.022 Vol.-%
Linearity error (straight line deviation):	≤ ± 0.066 Vol.-%
Long term stability (span):	≤ ± 0.088 Vol.-% over 12 month period
Long term stability (zero):	≤ ± 0.044 Vol.-% over 12 month period
Influence of T and P *	
Temp. dependence (zero):	≤ ± 0.008 Vol.-% per °C
Temp. dependence (span):	≤ ± 0.01 Vol.-% per °C
Pressure dependence:	± 0.14 Vol.-% of measurement value / hPa
Electrical inputs and outputs	
Supply voltage:	3.3 V .. 6.0 V DC
Supply current (peak):	< 500 mA @ 3.3 V, < 250 mA @ 6.0 V
Inrush current:	< 1000 mA
Average power consumption:	< 900 mW
Digital output signal:	Modbus ASCII / RTU via UART, autobaud, autoframe
Calibration:	zero and span by SW
Climatic conditions	
Operating temperature:	-10 .. + 40 °C
Storage temperature:	-20 .. + 60 °C
Air pressure:	800 .. 1150 hPa
Ambient humidity:	0 .. 95 % relative humidity (not condensing)
* Typical values related to 1013 hPa and 22 °C for dry (not condensing) and clean sample gas. Stated values exclude calibration gas tolerance.	

All rights reserved. Any logos and/or product names are trademarks of smartGAS. The reproduction, transfer, distribution or storage of information contained in this brochure in any form without the prior written consent of smartGAS is strictly prohibited. All specifications – technical included – are subject to change without notice. Depending on the application, the target gas and the measurement range the technical data may differ. No liability is accepted for any consequential losses, injury or damage resulting from the use of this document or from any omissions or errors herein. The data is given for guidance only. It does not constitute a specification or an offer for sale.

For more information, please visit www.smartGAS.eu or contact us at sales@smartgas.eu

Please consult smartGAS sales for parts specified with other temperature and measurement ranges.

At first initiation and depending on application and ambient conditions recalibration is recommended. Recurring cycles of recalibration are recommended.

Headquarter Switzerland:
Angst+Pfister Sensors and Power AG

Thurgauerstrasse 66
CH-8050 Zurich
Phone +41 44 877 35 00
sensorsandpower@angst-pfister.com

Office Germany:
Angst+Pfister Sensors and Power
Deutschland GmbH
Edisonstraße 16
D-85716 Unterschleißheim
Phone +49 89 374 288 87 0
sensorsandpower.de@angst-pfister.com



We are here for you. Addresses and Contacts.

Sales Germany & Austria

Geometrical sensors
Other products

Kurt Stritzelberger
Phone +49 89 374 288 87 22
kurt.stritzelberger@angst-pfister.com

Pressure sensors
Other products

Gerhard Vetter
Phone +49 89 374 288 87 26
gerhard.vetter@angst-pfister.com

Gas sensors and modules

Peter Felder
Phone +41 44 877 35 05
peter.felder@angst-pfister.com

Sales Switzerland & Liechtenstein

Postcode 3000 – 9999

Basil Frei
Phone +41 44 877 35 18
basil.frei@angst-pfister.com

Postcode 1000 – 2999

Christian Mohrenstecher
Phone +41 76 444 57 93
christian.mohrenstecher@angst-pfister.com

Sales International Key Accounts

Peter Felder
Phone +41 44 877 35 05
peter.felder@angst-pfister.com

Sales Other Countries / Product Management

Pressure Sensors
Load Cells

Philipp Kistler
Phone +41 44 877 35 03
philipp.kistler@angst-pfister.com

Gas sensors
Gas sensor modules

Dr. Thomas Clausen
Phone +49 89 374 288 87 24
thomas.clausen@angst-pfister.com

Flow / Level / Medical products

Dr. Adriano Pittarelli
Phone +49 89 374 288 87 67
adriano.pittarelli@angst-pfister.com

Power supplies

Sebastiano Leggio
Phone +41 44 877 35 06
sebastiano.leggio@angst-pfister.com

Linear position sensors
Angle sensors

Eric Letsch
Phone +41 44 877 35 14
eric.letsch@angst-pfister.com

Accelerometers
Sensor elements

Christoph Kleye
Phone +49 89 374 288 87 61
christoph.kleye@angst-pfister.com

Drive technology
CH Postcode 5000 – 9999 / DE

Roman Homa
Phone +41 76 444 00 86
roman.homa@angst-pfister.com

Drive technology
CH Postcode 1000 – 4999 / AT / IT / FR

Christian Mohrenstecher
Phone +41 76 444 57 93
christian.mohrenstecher@angst-pfister.com

Harald Thomas
Phone +49 89 374 288 87 23
harald.thomas@angst-pfister.com