

DATASHEET

SPD050SAhyb Pressure Sensor

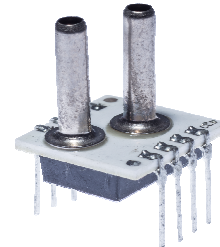
last update
september 28, 2016

reference
spd050sahyb n

page
1/1

SPECIAL LOW PRESSURE RANGE DIFFERENTIAL SENSOR WITH ANALOGUE OUTPUT(single version)

This Smartec differential pressure sensor has an amplified analogue output. The sensor is compensated for offset, sensitivity, temperature drift and nonlinearity. The sensor has a range of 50 mm H₂O FS and the output is ratiometric to the power supply voltage. Other pressure ranges on request (0.3 – 100 PSI).



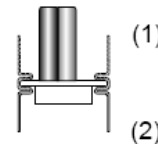
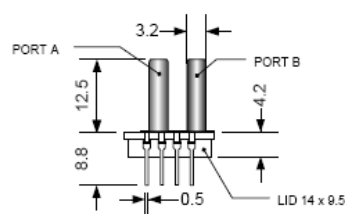
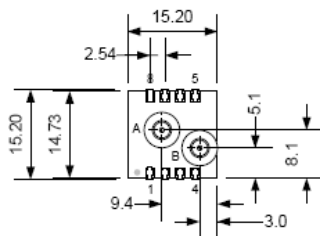
Electrical Characteristics

Performance Characteristic at V_{cc} =5V excitation @ 25 °C

Parameter	Min	Typ	Max	Units
Supply Voltage	4.75	5.00	5.25	V
Supply Current	-		2.0	mA
Pressure range (fs)			50	mmH ₂ O
Zero Output (Dif)	0.32	0.500	0.68	Vdc
Span Output (Dif)	3.8	4.0	4.2	Vdc
Response time		1	2	ms
Overall accuracy			4.5	%FS
Pressure overload			3X	rating
Temp compensation	0		50	°C
Operating Temp range	-10		70	°C
Storage temperature	-40		125	°C

It is advised to place a 100nF capacitor between V_{cc} and Gnd
Wetted materials are: Pyrex glass, RTV, Ceramic, Nickel and Silicon
The output is ratiometric to V_{cc}

Dimension



NOTE:
1. Port A is used for positive differential
2. Port A is not used for absolute
3. Port B is not used for gage
4. All dimension in mm

Use of N.C. pins will cause malfunction
Connect between V_{ss} and V_{dd} a capacitor of 100 nF

Pin	Description
1	NC
2	Gnd
3	Out
4	V _{cc}
5 - 8	NC


www.smartec-sensors.com

We are here for you. Addresses and Contacts.

Headquarter Switzerland:

Angst+Pfister Sensors and Power AG
Thurgauerstrasse 66
CH-8050 Zurich
Phone +41 44 877 35 00
sensorsandpower@angst-pfister.com

Office Germany:

Angst+Pfister Sensors and Power Deutschland GmbH
Edisonstraße 16
D-85716 Unterschleißheim
Phone +49 89 374 288 87 00
sensorsandpower.de@angst-pfister.com

Scan here and get an overview of personal contacts!



sensorsandpower.angst-pfister.com
