

DATASHEET

SPD030AAHyb Pressure Sensor

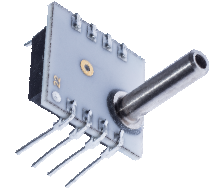
last update
oktober 4, 2016

reference
spd030aahybsm n

page
1/1

SPECIAL ABSOLUTE SENSOR WITH ANALOGUE OUTPUT

This Smartec absolute pressure sensor has an amplified analogue output. The sensor is compensated for offset, sensitivity, temperature drift and nonlinearity. The sensor has a range of 30 PSI FS and the output is ratiometric to the power supply voltage.



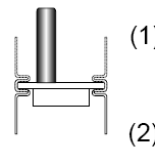
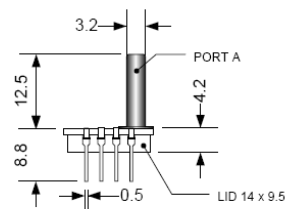
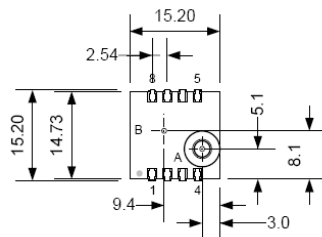
Electrical Characteristics

Performance Characteristic at Vcc =5V excitation @ 25 °C.

Parameter	Min	Typ	Max	Units.
Supply Voltage	4.75	5.00	5.25	V
Supply Current	-	2,5		mA
Pressure range (fs)			30	PSIA
Zero Output (Dif)	0,42	0,5	0,58	Vdc
Span Output (Dif)	3,92	4	4,08	Vdc
Response time		25		ms
Linearity	-0,5		+0,5	%FS
Thermal Hysteresis	-0.1		+0.1	%FS
Temp coeff. Offset	-1		+1,0	%FS
Temp coeff. Span	-1		+1	%FS
Pressure overload			3x	rating
Temp compensation	0		70	°C
Operating Temp range	-20		85	°C
Storage temperature	-40		125	°C

- It is advised to place a 100nF capacitor between Vss and Vdd
- Wetted materials are: Pyrex glass, RTV, Ceramic, Nickel and Silicon
- The output is ratiometric to Vcc

Dimension



NOTE:
1. Port B is used for positive differential
2. Port B is not used for absolute
3. Port A is not used for gage
4. All dimension in mm

Use of N.C. pins will cause malfunction

Connect between Vcc and Gnd a capacitor of 100 nF

Pin	Description
1	NC
2	Gnd
3	Out
4	Vcc
5 - 8	NC


smartec
www.smartec-sensors.com

We are here for you. Addresses and Contacts.

Headquarter Switzerland:

Angst+Pfister Sensors and Power AG
Thurgauerstrasse 66
CH-8050 Zurich
Phone +41 44 877 35 00
sensorsandpower@angst-pfister.com

Office Germany:

Angst+Pfister Sensors and Power Deutschland GmbH
Edisonstraße 16
D-85716 Unterschleißheim
Phone +49 89 374 288 87 00
sensorsandpower.de@angst-pfister.com

Scan here and get an overview of personal contacts!



sensorsandpower.angst-pfister.com
