

DATASHEET

SPD005GAsmd Pressure Sensor

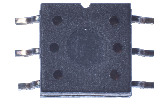
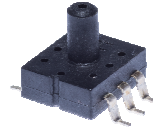
last update
oktober 5, 2016

reference
spd005gasmd n

page
1/1

This Smartec pressure sensor has an amplified analogue output. The sensor is compensated for offset, sensitivity, temperature drift and nonlinearity.

The sensor is available in the range from 5 to 100 psi. Other ranges on request. Available in Gauge and Absolute type. The output is ratiometric to the power supply voltage. @ 5 V power voltage the output span is 0.5 to 4.5 V. The SPD analogue series can be considered as an "analogue" successor of the SPD series.



Electrical Characteristics

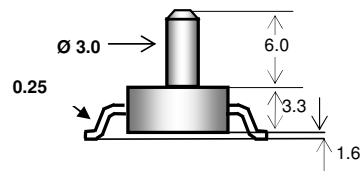
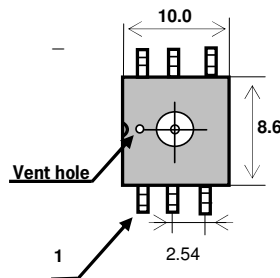
Performance Characteristic at Vcc =5V excitation @ 25 °C.

Parameter	Min	Typ	Max	Units
Supply Voltage	4.75	5	5.5	V
Supply Current			3	mA
Pressure range (fs)	0		5	psi
Zero Output *)	0.428	0.5	0.572	Vdc
Span Output *)		4.00		Vdc
Max output current			1	mA
Accuracy **)			±1.8	%FS
Response time		1	2	Ms
Pressure overload			3x	Rating
Operating temperature	-20		85	°C
Storage temperature	-40		125	°C

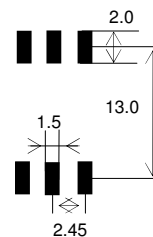
Wetted materials are: Pyrex Glass, Epoxy and silicon

*) Output is ratiometric to supply voltage

**) all errors included, temperature compensation over 50 °C



All sizes in mm



Pin Description

1	NC
2	Vcc
3	GND
4	Vcc
5	Out
6	GND

Do NOT connect NC pins
Apply 100nF between Vcc
and Gnd.


smartec
www.smartec-sensors.com

We are here for you. Addresses and Contacts.

Headquarter Switzerland:

Angst+Pfister Sensors and Power AG
Thurgauerstrasse 66
CH-8050 Zurich
Phone +41 44 877 35 00
sensorsandpower@angst-pfister.com

Office Germany:

Angst+Pfister Sensors and Power Deutschland GmbH
Edisonstraße 16
D-85716 Unterschleißheim
Phone +49 89 374 288 87 00
sensorsandpower.de@angst-pfister.com

Scan here and get an overview of personal contacts!



sensorsandpower.angst-pfister.com
