

# Pewatron PHPSU-4502 vs SCX Series

## 1. Dimensions

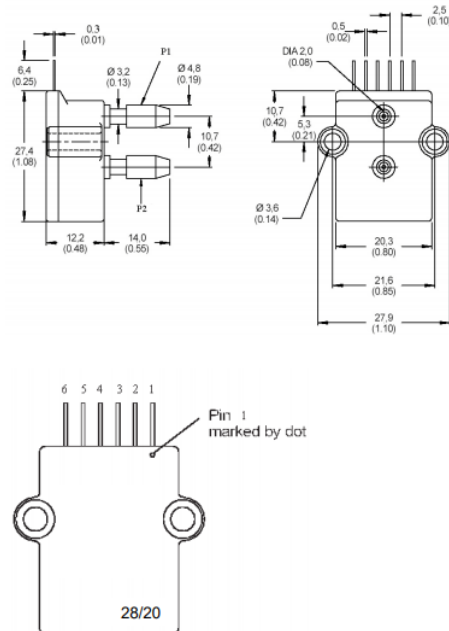


Figure 1: PHPSU-4502

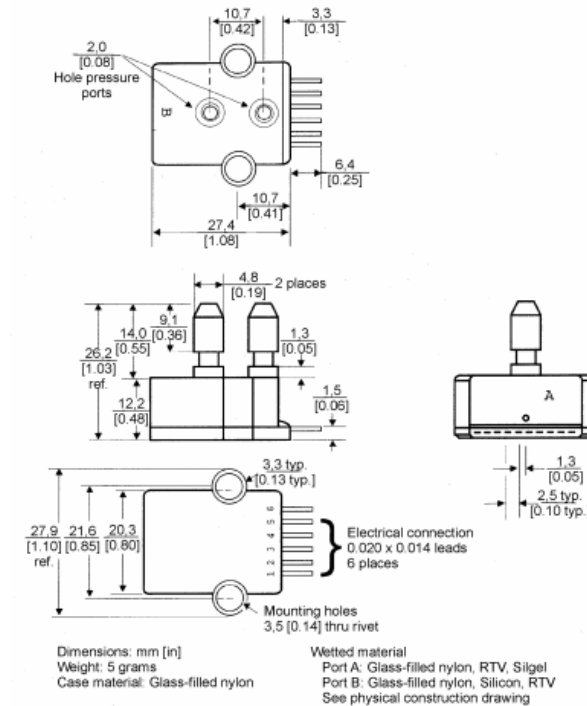


Figure 2: SCX Series

The dimensions are the same on both sensors.

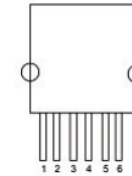
## 2. Pinout

Pin number	Output
1	Temp out+
2	Vs
3	+OUT
4	GND
5	-OUT
6	Temp out-

Note: Output polarity is defined for positive pressure on port P2

Figure 3: PHPSU-4502 pinout

### ELECTRICAL CONNECTION



PIN 1) TEMPERATURE OUTPUT (+)  
 PIN 2) Vs  
 PIN 3) + OUTPUT  
 PIN 4) GROUND  
 PIN 5) - OUTPUT  
 PIN 6) TEMPERATURE OUTPUT (-)

Figure 4: SCX Series pinout

The pinout of both Sensors is the same. There are no layout changes necessary to use the PHPSU-4502, it is one to one compatible.

## 3. Performance characteristics

Parameter	Typ. (SCX)	Typ. (PHPSU)	Max. (SCX)	Max. (PHPSU)	Unit
Input voltage	20	12-20			V
Thermal error of span (0 to 70°C)	±0,2	±0,2	±1	±1	%FS
Thermal error of offset (0 to 70°C)	±0,1	±0,2	±0,5	±0,5	mV
Combined linearity and hysteresis	±0,1	±0,2	±0,5	±0,5	%FS
Input impedance	4	25			kΩ
Output impedance	4	4			kΩ
Repeatability	±0.2	±0,05	±0.5		%FSO
Long-term stability of offset and span	±0.1	±0, 1			mV

The characteristics are almost the same and on some points like the repeatability or the long-term stability the PHPSU-4502 easily outperforms the SCX Series.

## 4. Cross-Reference list

The following list shows which PHPSU-4502 is compatible with which SCX model.

SCX	PHPSU-4502 equivalent	Pressure Range
SCXL004DN	PHPSU4502-004H-D	10mbar
-	PHPSU4502-0P3P-D	20mbar
-	PHPSU4502-0P8P-D	50mbar
SCX01DN or DNC	PHPSU4502-001P-D	70mbar
SCX05DN or DNC	PHPSU4502-005P-D	350mbar
SCX15DN or DNC	PHPSU4502-015P-D	1bar
SCX30DN or DNC	PHPSU4502-030P-D	2bar
SCX100DN or DNC	PHPSU4502-100P-D	7bar
SCX150DN or DNC	PHPSU4502-150P-D	10bar
SCX15AN or ANC	PHPSU4502-015P-A	1bar
SCX30AN or ANC	PHPSU4502-030P-A	2bar
SCX100AN or ANC	PHPSU4502-100P-A	7bar
SCX150AN or ANC	PHPSU4502-150P-A	10bar

Headquarter Switzerland:  
Angst+Pfister Sensors and Power AG  
Thurgauerstrasse 66  
CH-8050 Zurich  
Phone +41 44 877 35 00  
sensorsandpower@angst-pfister.com

Office Germany:  
Angst+Pfister Sensors and Power Deutschland GmbH  
Edisonstraße 16  
D-85716 Unterschleißheim  
Phone +49 89 374 288 87 0  
sensorsandpower.de@angst-pfister.com



## We are here for you. Addresses and Contacts.

---

### Sales Germany & Austria

Geometrical sensors  
Other products

Kurt Stritzelberger  
Phone +49 89 374 288 87 22  
kurt.stritzelberger@angst-pfister.com

Pressure sensors  
Other products

Gerhard Vetter  
Phone +49 89 374 288 87 26  
gerhard.vetter@angst-pfister.com

Gas sensors and modules

Peter Felder  
Phone +41 44 877 35 05  
peter.felder@angst-pfister.com

---

### Sales Switzerland & Liechtenstein

Postcode 3000 – 9999

Basil Frei  
Phone +41 44 877 35 18  
basil.frei@angst-pfister.com

Postcode 1000 – 2999

Christian Mohrenstecher  
Phone +41 76 444 57 93  
christian.mohrenstecher@angst-pfister.com

### Sales International Key Accounts

Peter Felder  
Phone +41 44 877 35 05  
peter.felder@angst-pfister.com

---

### Sales Other Countries / Product Management

Pressure Sensors  
Load Cells

Philipp Kistler  
Phone +41 44 877 35 03  
philipp.kistler@angst-pfister.com

Gas sensors  
Gas sensor modules

Dr. Thomas Clausen  
Phone +49 89 374 288 87 24  
thomas.clausen@angst-pfister.com

Flow / Level / Medical products

Dr. Adriano Pittarelli  
Phone +49 89 374 288 87 67  
adriano.pittarelli@angst-pfister.com

Power supplies

Sebastiano Leggio  
Phone +41 44 877 35 06  
sebastiano.leggio@angst-pfister.com

Linear position sensors  
Angle sensors

Eric Letsch  
Phone +41 44 877 35 14  
eric.letsch@angst-pfister.com

Drive technology  
CH Postcode 5000 – 9999 / DE

Roman Homa  
Phone +41 76 444 00 86  
roman.homa@angst-pfister.com

Drive technology  
CH Postcode 1000 – 4999 / AT / IT / FR

Christian Mohrenstecher  
Phone +41 76 444 57 93  
christian.mohrenstecher@angst-pfister.com

Accelerometers  
Sensor elements

Christoph Kleye  
Phone +49 89 374 288 87 61  
christoph.kleye@angst-pfister.com

Harald Thomas  
Phone +49 89 374 288 87 23  
harald.thomas@angst-pfister.com

**Experts on Design-In**  
for sensors and power solutions