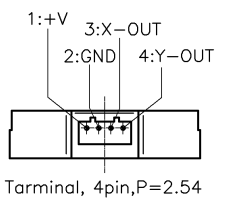
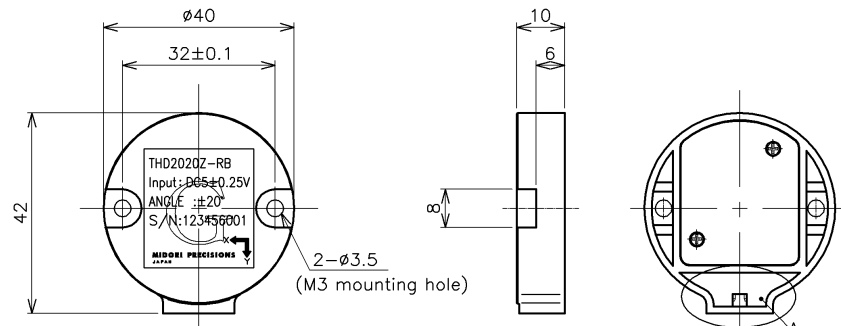
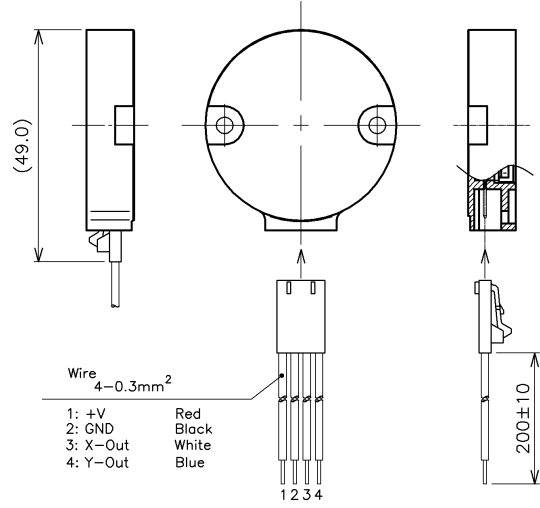


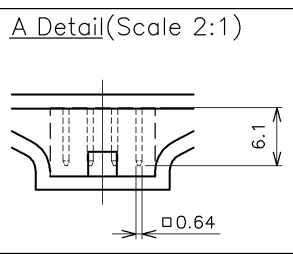
Dimension



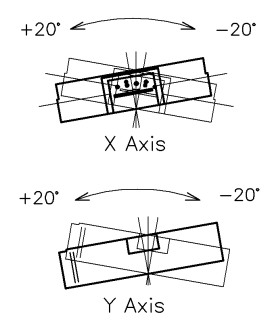
Connector



- 1: +V Red
- 2: GND Black
- 3: X-Out White
- 4: Y-Out Blue



Direction of tilt



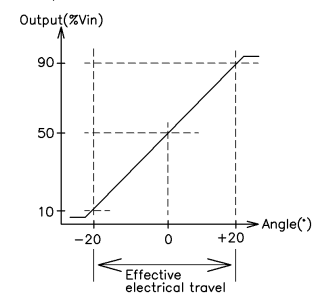
Specifications

- Effective electrical travel : ±20°
- Absolute linearity : ±1.0 %FS (FS= 40°)
- Input voltage : DC5±0.25V
- Supply current : 20mA MAX.
- Insulation resistance : DC50V 100MΩ MIN.
- Temperature drift : -30~85℃ (Reference temp. 25℃)
±0.2°/0° Position, ±1.2°/±20° Position
- Step response time : Approx. 500ms (DAMPER=B)
- Mass : Approx. 15g MAX.
- Operating temperature range : -30~85℃
- Storage temperature range : -30~85℃
- Vibration : JIS D 1601 3-3
70 m/s² 5~500Hz (10min.) Up/Down 4hours, 2axis 2hours each
- Shock : 1000 m/s² 6ms 3axis 3times
- EMS : IEC61000-4-3 Level 3
- ESD : IEC61000-4-2 ±16 kV
- IP Level : IP50

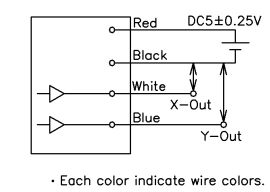
NOTE

1. As this product is using "COMS IC", handling of harness must be done under the ESD protection.
2. If power supply voltage is connected to each output lines, it would be caused of failure. Please do not connect to live cables. Also be sure to connect appropriately.
3. Tilt angle may not be measured correctly under the condition of vibration 1G min.

Output characteristics



Schematic



SPECIFICATION DRAWING				CUSTOMER/SPEC. NO.	
MODEL: THD2020Z-RB					
APPROVED	M. Dato	TOLERANCE	DATE	2018.10.25	MIDORI PRECISIONS CO., LTD.
CHECKED	M. Dato	±10 ±0.25	SCALE	1:1	DRAWING NO.
DRAWN	Y. Sugimoto	10< ±100 ±0.5	DRAWING PRACTICE		REV.
				A-MPF-B30 0	

REV.	DATE	DESCRIPTION	APPROVED	CHECKED	DRAWN

A3

Headquarter Switzerland:
Angst+Pfister Sensors and Power AG
Thurgauerstrasse 66
CH-8050 Zurich
Phone +41 44 877 35 00
sensorsandpower@angst-pfister.com

Office Germany:
Angst+Pfister Sensors and Power Deutschland GmbH
Edisonstraße 16
D-85716 Unterschleißheim
Phone +49 89 374 288 87 0
sensorsandpower.de@angst-pfister.com



We are here for you. Addresses and Contacts.

Sales Germany & Austria

Geometrical sensors
Other products

Kurt Stritzelberger
Phone +49 89 374 288 87 22
kurt.stritzelberger@angst-pfister.com

Pressure sensors
Other products

Gerhard Vetter
Phone +49 89 374 288 87 26
gerhard.vetter@angst-pfister.com

Gas sensors and modules

Peter Felder
Phone +41 44 877 35 05
peter.felder@angst-pfister.com

Sales Switzerland & Liechtenstein

Postcode 3000 – 9999

Basil Frei
Phone +41 44 877 35 18
basil.frei@angst-pfister.com

Postcode 1000 – 2999

Christian Mohrenstecher
Phone +41 76 444 57 93
christian.mohrenstecher@angst-pfister.com

Sales International Key Accounts

Peter Felder
Phone +41 44 877 35 05
peter.felder@angst-pfister.com

Sales Other Countries / Product Management

Pressure Sensors
Load Cells

Philipp Kistler
Phone +41 44 877 35 03
philipp.kistler@angst-pfister.com

Gas sensors
Gas sensor modules

Dr. Thomas Clausen
Phone +49 89 374 288 87 24
thomas.clausen@angst-pfister.com

Flow / Level / Medical products

Dr. Adriano Pittarelli
Phone +49 89 374 288 87 67
adriano.pittarelli@angst-pfister.com

Power supplies

Sebastiano Leggio
Phone +41 44 877 35 06
sebastiano.leggio@angst-pfister.com

Linear position sensors
Angle sensors

Eric Letsch
Phone +41 44 877 35 14
eric.letsch@angst-pfister.com

Drive technology
CH Postcode 5000 – 9999 / DE

Roman Homa
Phone +41 76 444 00 86
roman.homa@angst-pfister.com

Drive technology
CH Postcode 1000 – 4999 / AT / IT / FR

Christian Mohrenstecher
Phone +41 76 444 57 93
christian.mohrenstecher@angst-pfister.com

Accelerometers
Sensor elements

Christoph Kleye
Phone +49 89 374 288 87 61
christoph.kleye@angst-pfister.com

Harald Thomas
Phone +49 89 374 288 87 23
harald.thomas@angst-pfister.com

Experts on Design-In
for sensors and power solutions